

COHLINE®



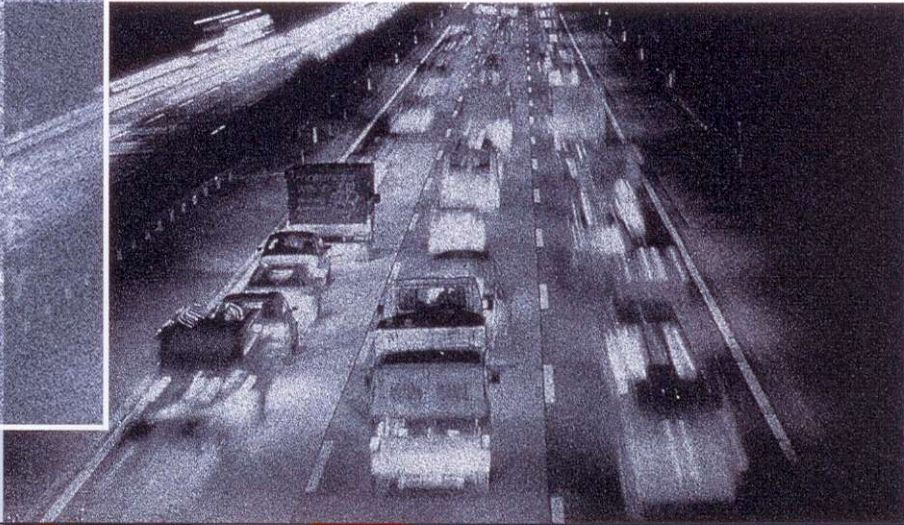
**Innovative
Line Systems
for the
Automotive Industry**



Shaping the future with you

DEVELOPMENT

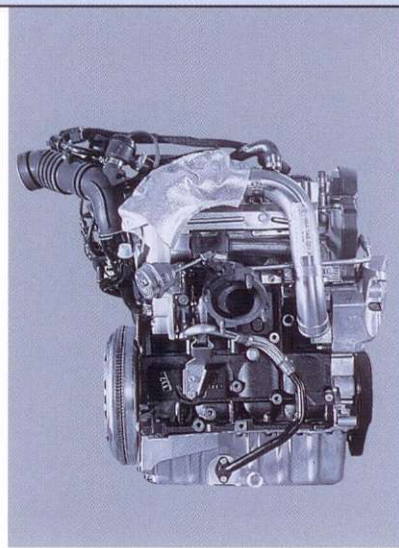
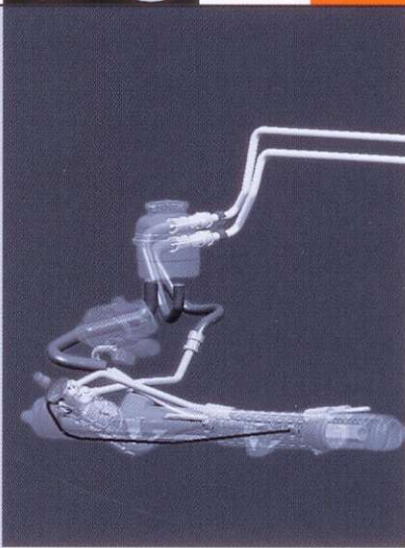
CURVE
BACK
ANALYSIS
STANDARD
MAGNIFY
AUXILIARY
LAYER
DETAIL
PLOT
AXIS
SOLIDE
ERASE
UTILITY
GRAPHIC
OPERATE
LIBRARY
MERGE
FILE



The Cohline company group produces tube and hose line systems for the automotive, commercial vehicle, construction, agricultural machinery and motor industries as well as their system suppliers.

Since our foundation in the year 1932, we have been concentrating on this business. We have succeeded in proving our outstanding competence through pioneering developments and patents.

Even speak with us in the planning phase, since our ability to co-operate constructively as partners in the development stages is one of our company group's outstanding qualities. Through discussions with you, we will work out cost-effective solutions for the technological advancement in tough competition.



DUCTION

Fields of application:

Fuel Systems, e.g.

- feed/return lines
- ventilation systems
- injection line sets
- regeneration lines

Power Steering Systems, e.g.

- expansion hose lines
- suction hose lines
- return lines
- cooling coils made out of round and finned tube

Engine Cooling, e.g.

- feed and return lines to the oil cooler or water cooler
- cooling coils made out of round and finned tube



Optimal products through optimized processes

PROD



Transmission Oil Cooling

- feed and return lines to the oil cooler
- cooling coils made out of round and finned tube

Brake Systems and ABS, e.g.

- pressure lines
- return lines

Hydraulic Clutch Systems, e.g.

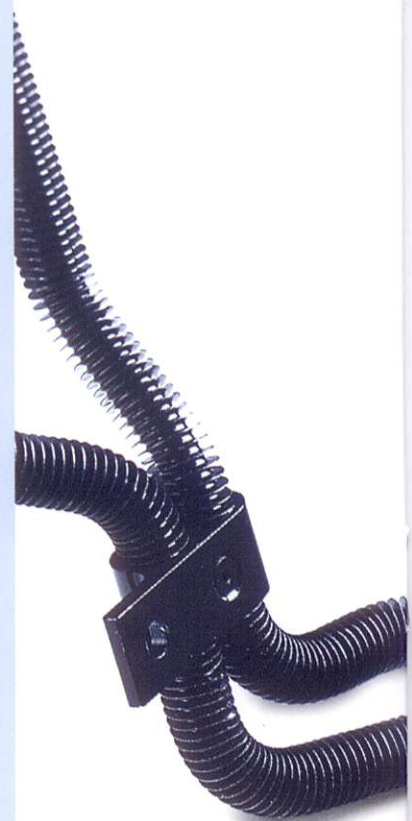
- pressure lines for feed and return cylinders

Level Regulation, e.g.

- high pressure lines
- return lines

Drive, e.g.

- lines for ASC/ASR
- lines for hydraulic differential locking device



References:



Audi

PORSCHE

OPEL



VOLVO



VAUXHALL

DELPHI

Valeo

MODINE

Materials:

Metals

- steel and high-grade steel
- aluminium
- brass
- copper
- various alloys

Plastics

- polyamid, PTFE

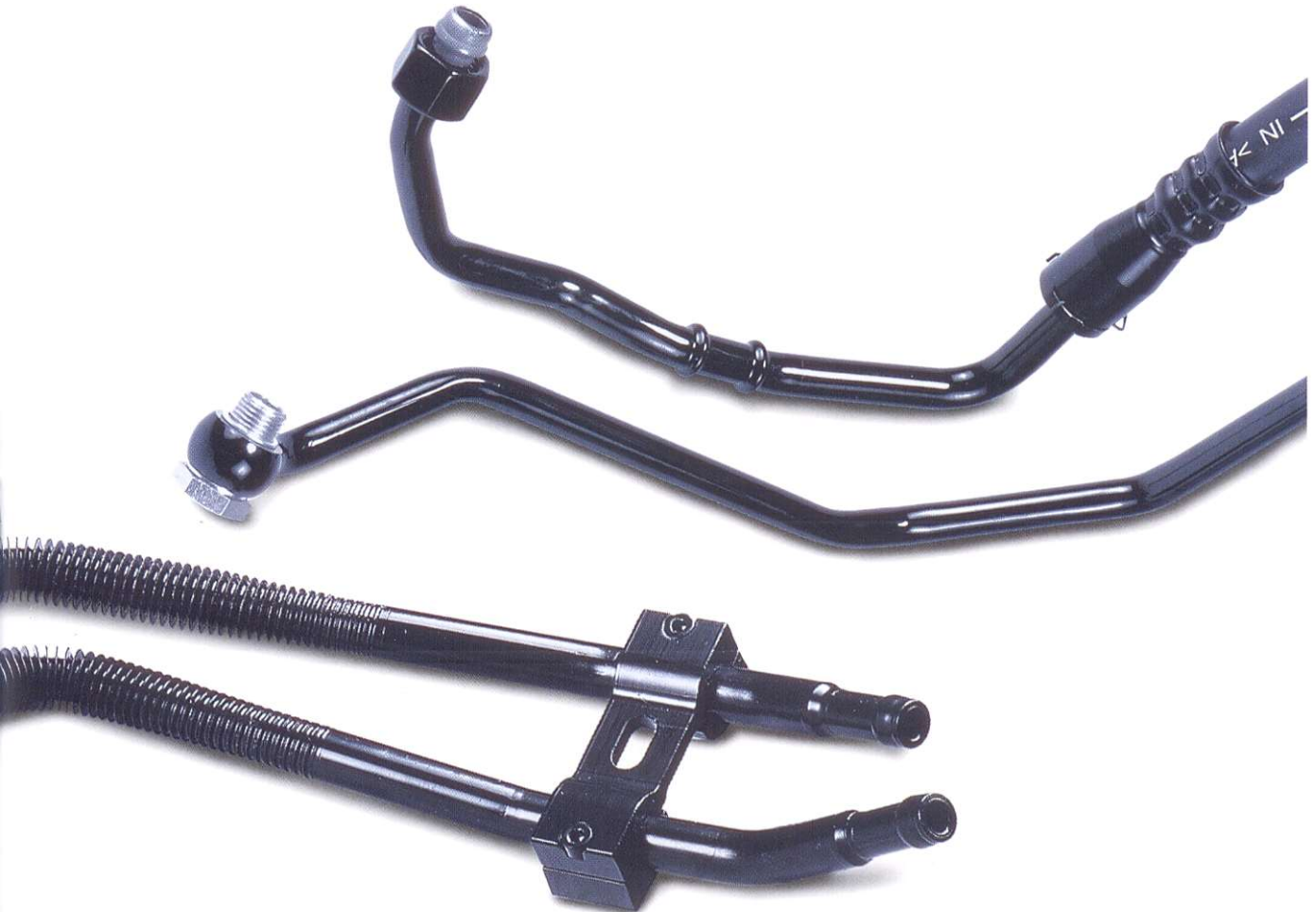
Elastomers

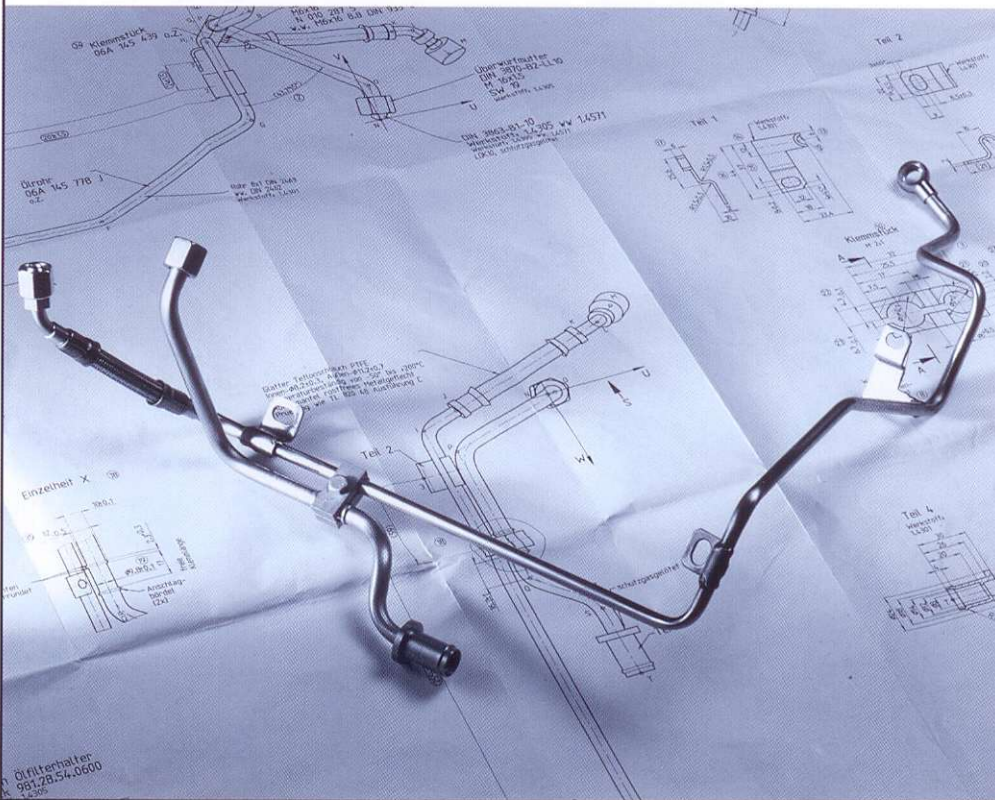
- e.g. NBR, CR, EPDM, CSM, FPM, AEM, ECO

Various Combinations
from the above-mentioned
materials.

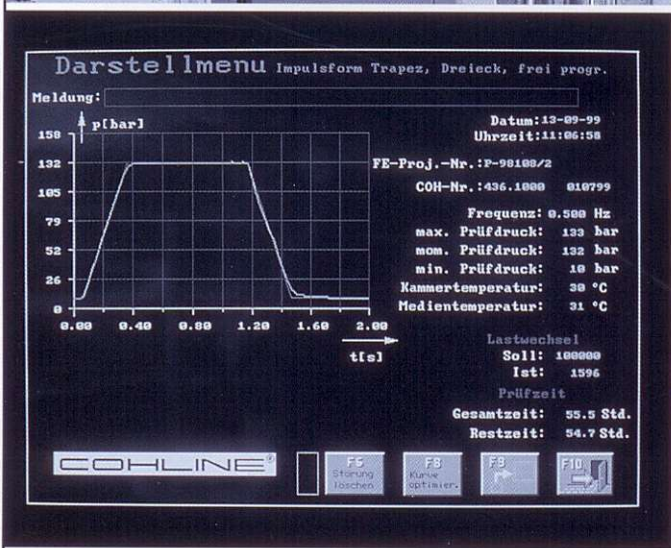
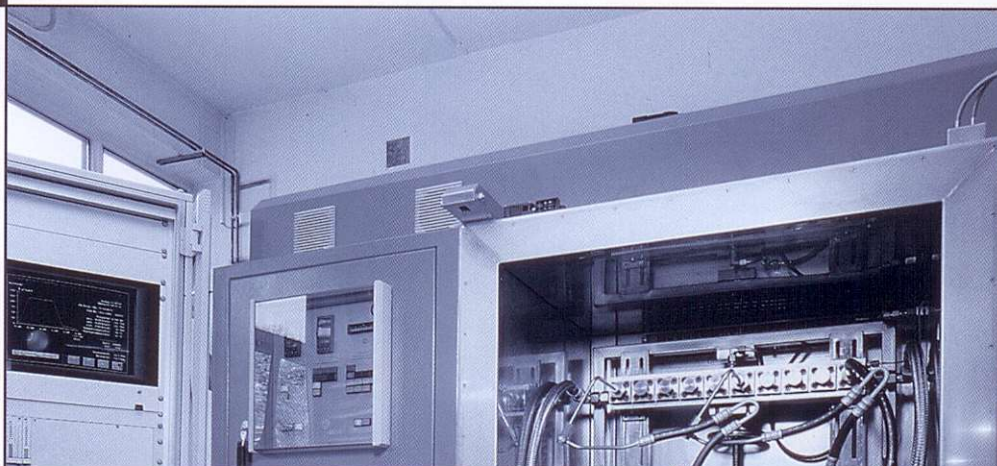


sses





Avoiding mistakes instead of correcting mistakes



COVA



Quality is the fulfilment of customer requirements! Quality is a state of mind. Our employees think in a quality-orientated way. This positive attitude is supported through training and motivation and is implemented in the organisation as a whole.

The quality strategy of Cohline covers all areas of the company. It focuses on prevention with the aim of avoiding mistakes.

The cornerstones of the strategy are:

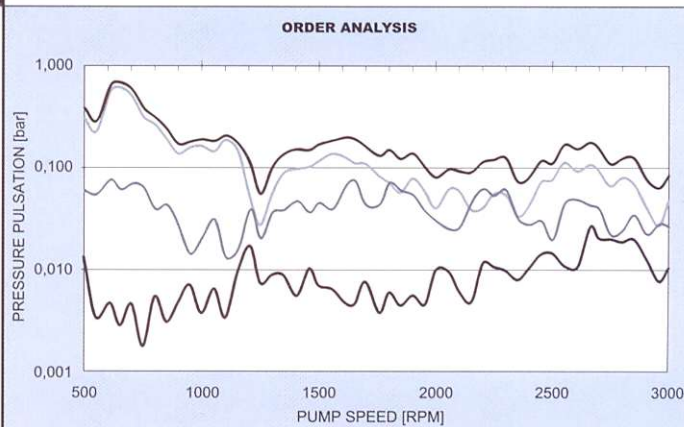
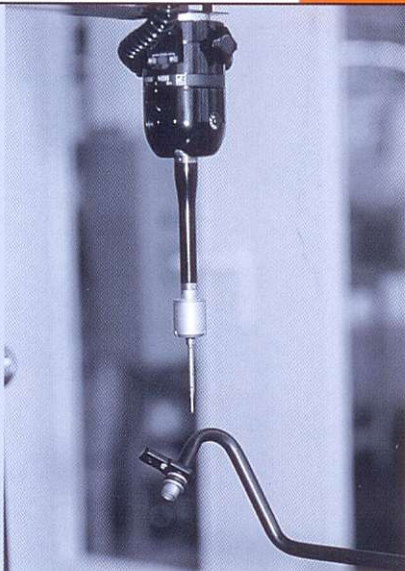
High capability of machines and processes.

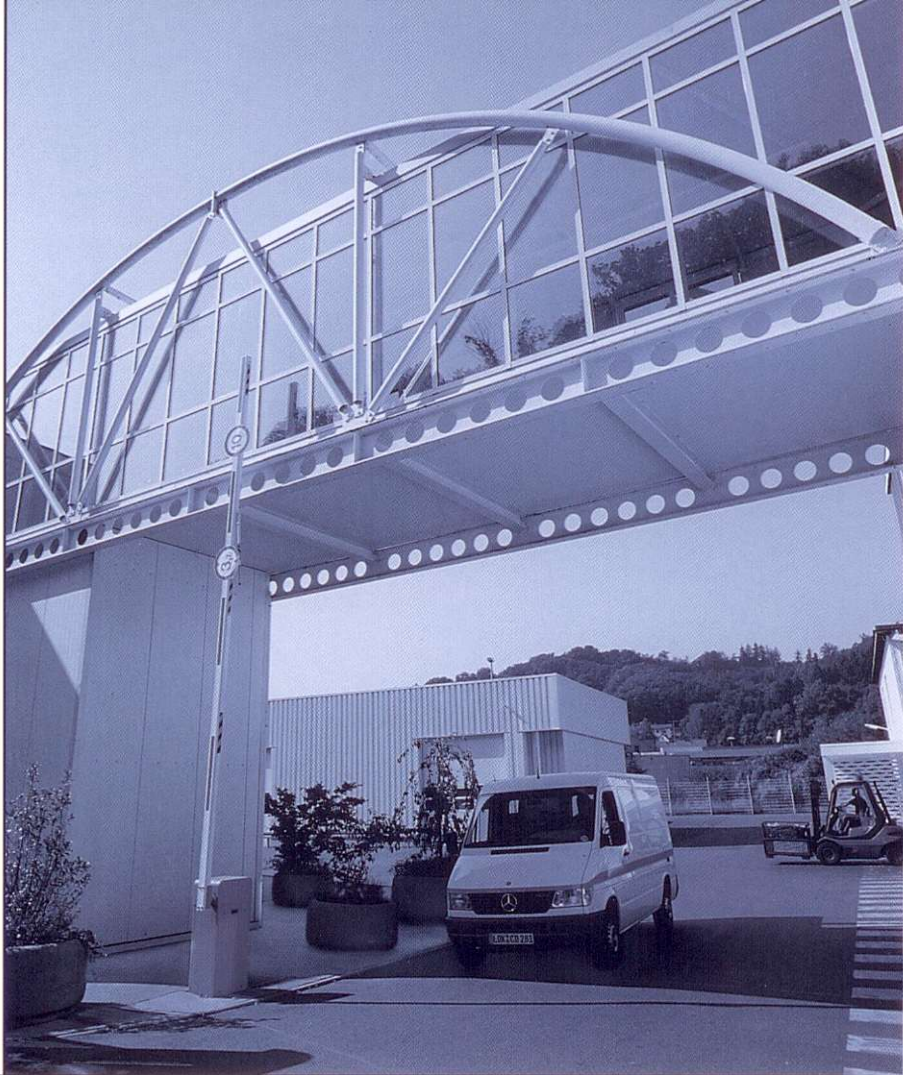
Clear responsibilities in all areas.

Application of efficient QS-techniques and instruments such as FMEA, SPC and QFD.

Accomplishment of all relevant certification requirements.

A healthy relationship within the company group and with all our clients.





Partner of the world-wide Automotive Industry



PARTNER
OF THE
WORLD-WIDE
AUTOMOTIVE
INDUSTRY

Cohline is a leading and expanding company group with approx. 600 employees with two sites in Germany as well as a further two in England and the U.S.A.

We consider the commitment of the employees to focus on targets and teamwork as our strength. We appoint this in the interests of our clients, since the competitiveness of the company is decided upon only by the benefit of our products for the customer.

We are development and systems partner of the Automotive Industry and we make a contribution to the success of our customers.

The future means opportunity. We are pleased to take on its challenges through trusting in our own abilities.

Cohline GmbH
Kasseler Strasse 24
D-35683 Dillenburg
Telefon: 0 27 71 / 3 99-0
Telefax: 0 27 71 / 3 99-128
eMail: info@Cohline.de
www.cohline.de

Cohline GmbH
Staudter Strasse
D-56410 Montabaur

Cohline (UK) Ltd
Manston Park
GB-Manston, Kent CT 125 DE

Cohline Rep. Office
Valmont Industrial Park
USA-Hazleton PA 18201